

Estimate for Replacement Deteriated 100 KVA DPMT TC code 173142 H Matakere Village TC Structure Poles due to Dangerous Condition @ H Matakere Village TC in H D Kote section, H D Kote S/d.

PART-A COMMISIONING

Particulars of Equipments	Unit	Qty	Rate	Amount	Rate of Labour	Labour
RCC pole 9 Mtr long	Nos	2	7153	14306.00	1341.00	2682.00
RCC pole 8 Mtr long	Nos	0	5306.00	0.00	1072.00	0.00
PSC pole 9 Mtr long	NO	0	4276	0.00	1341.00	0.00
PSC pole 8 Mtr long	Nos	0	3578	0.00	1072.00	0.00
11 KV pin insulators Polymer	NO	3	221.00	663.00		
HG Fuse Unit	NO	1	1032.00	1032.00	178.00	178.00
LT Kit	NO	2	1915.00	3830.00	260.00	520.00
TC Struture Set	Set	0	6712.00	0.00	3158.00	0.00
Guy Wire for TC wiring	KG	5	80.11	400.55		
Earthing Pipe	Set	1	1733.00	1733.00	735.00	735.00
Guy set complete	NO	2	1209.00	2418.00	448.00	896.00
Bolt & Nuts 4'	KG	2	89.10	178.20		
Rabbit conductor with 1.5% Sag	KM	0.005	61515.00	307.58	3299.00	16.50
Conductor Accessories 3 %				9.23		
No 2 ACSR conductor with 1.5% sag	KM	0.005	37018	185.09	2420.00	12.10
Conductor Accessories at 3%				5.55		
Alluminium Lead wire 120 Sq mm	Mtr	40	112.01	4480.40		
Relese & Re string of Rabbit Conductor 11kv line	KM	0.24	0.240X3299 X 190%			1504.34
Relese & Re string of 2 ACSR Conductor	KM	0.32	0.32X 2420 X 190%			1471.36
Relese & Re fixing of LT 4 Pin X Arms	Set	2	2X122X 190%			463.60
Relese & Re fixing of 100KVA TC	Set	1	1X1151X 90%			776.70
Realising & Refixing of TC Set	Set	1	1X2281 X190%			4333.90
Loading & Unloading of 9 Mtr poles	Nos	2			106.00	212.00
Loading & Unloading of 8 Mtr poles	Nos	0			92.00	0.00
Loading of Insulators & Hardware materials 10% of the pole loading Ch						21.20
Unloading of Insulators & Hardware materials 10% of the pole loading Ch						21.20
Miscelleaneous & UFS materials	L/S			32.00		67.00
Material Cost				29580.59		13910.90
labour charges				13910.90		
L. A. 30% on Labour charges				4173.27		
Service Tax 18% on L.Chr (2+3)				3255.15		
Contribution towards Employee P.F and E.S.I on Total L.Chr at 18.36 %				3320.25		
Transportation cost 2% on Material charges				591.61		
Contengencies @ 2% on material + labour charges				869.83		
Escom Establishment cost 20 % on total labour charges				2782.18		
Total Estimate Cost				58483.79		
Rounding Off				58484.00		

MARK-D DE-COMMISSIONING

Particulars of Equipments	Unit	Qty	Rate	Amount	Rate of Labour	Labour
Supplying of 8 Mtr Pole	Nos	2	2X 1072X 90%			1929.60
Miscellaneous & UFS materials	L/S					49.00
Material Cost						
Labour charges						1978.60
30% on Labour charges				1978.60		
Service Tax 18% on L.Chr (2+3)				593.58		
Contribution towards Employee P.F and E.S.I				462.99		
Total L.Chr at 18.36 %				363.27		
Transportation cost 2% on Material charges						
Contingencies @ 2% on material + labour charges				0.00		
Employees cost 20 % on total labour charges (2+3)				39.57		
Total Estimate Cost				514.44		
Rounding Off				3952.45		
				3952.00		

Particulars of the released Materials & Returnable to Store.						
Material list	Nos	Qty	Condition			
Supplying of 8 Mtr RCC Pole	Nos	2	Scrap Return to Store			
Date of Commissioning	Nos	More than years				
Date of Decommissioning	Nos	After sanctioned this estimate				
Materials to be furnished by Account staff.						
Original Cost :						
Depreciation Earned :						
Returned down value :						

Total cost of this estimate is = 66743.00

CERTIFICATE:-

I have personally visited the spot and prepared this estimate using current schedule of rates in the most economical and safe way of executing the work.

REPORT

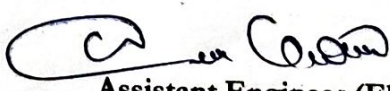
This estimate is prepared for Rs **66743.00** for Replacement Deteriated 100 KVA DPMT TC code 173142 H Matakere Village TC Structure Poles due to Dangerous Condition @ H Matakere Village TC in H D Kote section. H D Kote S/d.

It Proposed to Replacement of Deteriated TC Struture of H Matakere Village TC due to Dangerous condition structure also bended.so proposed to replacment of poles for restoration of Village Supply.This estimate is include all necessary line materials and labour charges have been provided in this estimate. Hence the estimate may kindly be approved at an early.

C/S

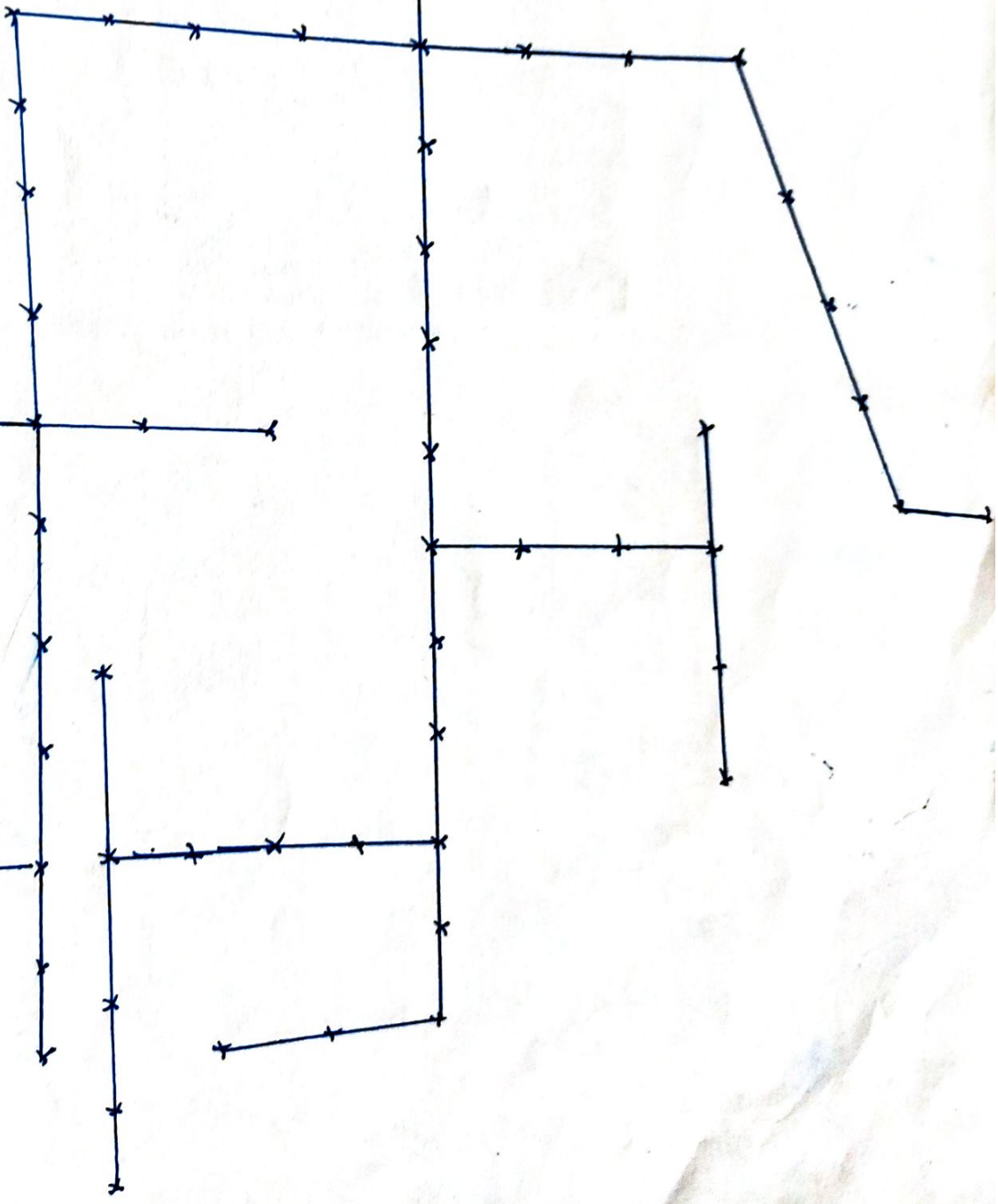
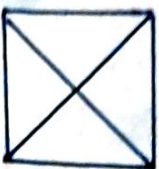

Assistant Executive Engineer (Ele.)
CESC, O&M Sub-division
H D Kote

Submitted


Assistant Engineer (Ele.)
CESC,
H D Kote section.

Mafakese. Village TC-100

173142



Handwritten notes in purple ink, including the number '24' and some illegible text.

Handwritten notes in black ink, including the number '24' and some illegible text.

